

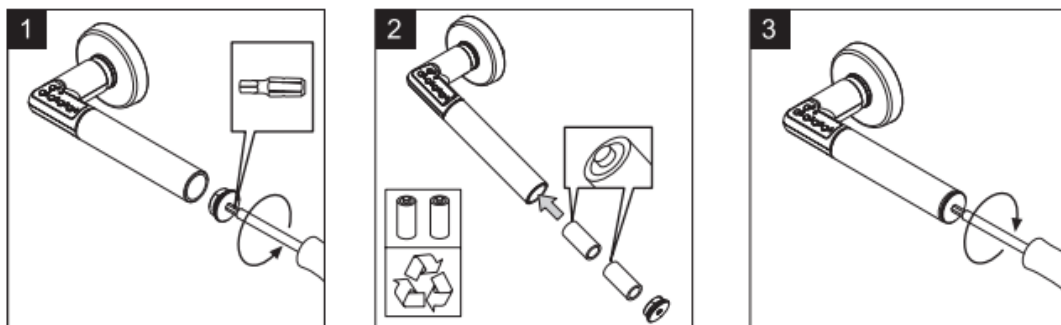
### Operating instructions Code Handle 8812 EU DIN Standard



#### Batteries

ASSA ABLOY Code Handle is supplied with 2 x CR2 batteries installed. The lifetime of the batteries should be at least a couple of years depending on the number of operations and the effect on the batteries. If the light signals red when pushing down a key it is time to change batteries. The handle will remember all codes during the battery change.

It is important to choose batteries of good quality when changing them. Use CR2 batteries of a well-known brand.



When changing batteries follow the instructions on image 1-3 above, and follow the necessary safety precautions:

- Install the batteries correctly, see image 2. Be aware of the polarity
- Do not mix used and new batteries. Do not mix different brands.

## Code Handle® 8812 EU DIN Std

01/2019

Experience a safer  
and more open world

- Change both batteries at the same time
- Do not incinerate batteries, properly dispose of used batteries
- Do not leave them within the reach of children.

### **Security**

If a wrong code is entered five times the handle is locked-out for 3 minutes and the light will flash red every five seconds. To pass the lock-out, enter the correct code twice and then once more to gain access.

### **User codes**

ASSA ABLOY Code Handle has capacity for 9 different user codes which can be programmed after entering the administration code.

#### **Add or change a code in the memory:**

1. Press the padlock key until a red, steady light appears.
2. Enter the administration code within 5 sec. The light turns green.
3. To store the code in one of the 9 memory positions use key number 1 and press the number of times corresponding to selected memory position; one press for memory position 1 and two presses for memory position 2 etc.
4. Wait until a green, steady light appears.
5. Enter the new user code, consisting of 4, 5 or 6 digits.
6. Press the padlock key to confirm or wait until the green light is turned off.
7. More user codes can be stored on the remaining memory positions by following the instructions above and storing, according to point 3.

#### **Delete a code from memory:**

1. Press the padlock key until a red, steady light appears.
2. Enter the administration code within 5 sec. The light turns green.
3. Select which one of the 9 memory positions to be deleted by pressing key number 1 the required number of times; one time for memory position 1 and two times for memory position 2 etc.
4. Wait until a green, steady light appears.
5. Delete by pressing the pad lock key. The light shines red and the selected memory place is now deleted.
6. To delete more memory positions repeat the instruction above and indicate corresponding memory positions by following instructions in point 3.

## Code Handle® 8812 EU DIN Std

01/2019

Experience a safer  
and more open world

### **Sound signal**

The handle is delivered with the sound signal on and can be turned off/on as follows:

1. Press the padlock key until a red, steady light appears.
2. Enter the administration code within 5 secs. The light shines green.
3. Press one time on key number 2 to turn off/turn on the sound. A weak signal indicates that the sound is off and a strong double signal indicates that the sound is on.
4. Press the padlock key to confirm or wait until the green light is turned off.

### **Automatic locking**

The handle is delivered in manual mode. Automatic locking can be set within 9 secs after the correct code is keyed, provided that the handle is back in its horizontal position within this time.

To change mode follow the instructions below:

1. Press the padlock key until a red, steady light appears.
2. Enter the administration code within 5 sec. The light shines green.
3. Press one time on key number 3 to change the mode to/from automatic locking.
4. Press the pad-lock key to confirm the change or wait until the green light stops.

### **Temporary leave lock open function when in automatic locking mode**

Key the correct user code and directly after the light stops flashing, press button 1 and 4 at the same time. The door is now left unlocked until the next time either the lock button or the user code is keyed, where after it goes back into automatic locking mode.

### **Memory reset**

The handle can be reset back to factory settings by changing the administrator code. (see above)

Note the handle is supplied as:

- No user code set
- Sound signal on
- Auto-lock off

**If you would like to watch a video to see how to set up & operate Code Handle, click the link below:**

<http://youtu.be/e5a4OVOQ4nE>